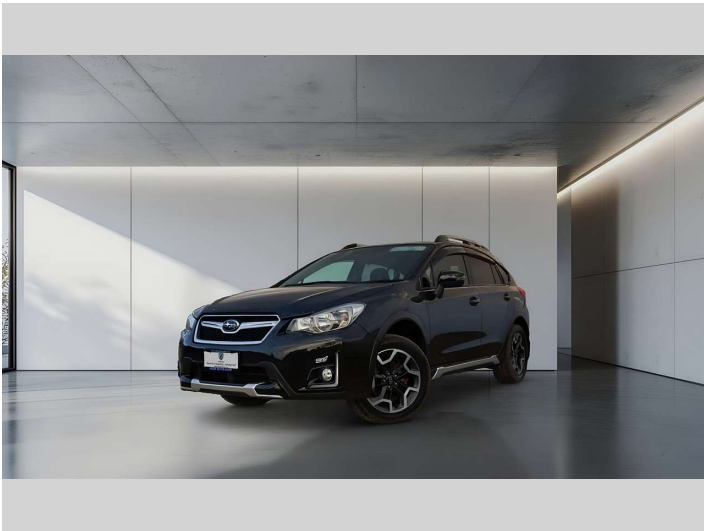


2016 Subaru Xv 2.0i



Purchase Price

\$18,990

Includes GST, Registration & Licensing

Finance may be available on this vehicle. Ask one of our friendly staff for more information.

Gain peace of mind with Mechanical Breakdown Insurance. **Ask us how.**

Top features

- » Cruise Control
- » ESC
- » Paddle Shift

VALLEY MOTOR COURT

FINANCE THIS CAR FROM

\$128.20*

per week

*Finance calculation based on a 48 month term, no deposit and with an example annual fixed interest rate of 3.50%. Actual interest rate may be higher or lower. Includes an establishment fee of \$200.00 and a monthly maintenance fee of \$3.00. Full term total amount payable of \$26,665.04. Estimate only, not an offer of finance. Terms, conditions and lending criteria apply.



Body Style

Hatchback

Odometer

99,347 km

Engine

2000 cc

Fuel Type

-

Transmission

CVT

Wheels

-

VIN

7AT0GF1XX25125128

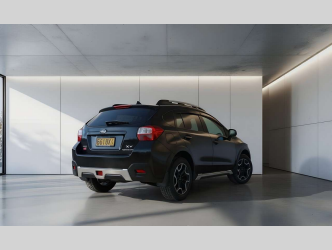
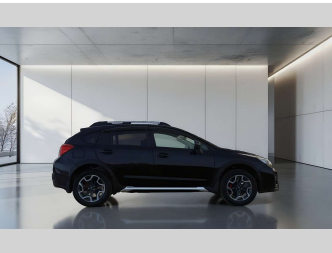
Interior

-

Safety



Based on 2024 UCSR rating for 12-16 models



Reg No.

-

Ext Colour

Black

History

-

Seats

5 seats

CO2 Emissions

★★★★☆

163 grams/km

Energy Economy

★★☆☆☆

**Annual fuel cost of \$2,740
7L per 100km**

Cost per year is an estimate based on petrol price of \$2.80 per litre and an average distance of 14000 km. Emissions and Energy Economy figures standardised to 3P WLTP.



Scan this QR code for more info
Stock ID: 4189



Valley Motor Court | Phone 0800 58 2277 | Email sales@vmc.nz
533 Kaikorai Valley Road, Kenmure, Dunedin 9011, New Zealand
www.valleymotorcourt.co.nz

OB

★★★★★
4.87 | 642 reviews